



Vestil Manufacturing Corp.

A company dedicated to solving loading dock and material handling problems since 1955.

2999 North Wayne Street, P.O. Box 507, Angola, IN 46703

Telephone: (260) 665-7586 -or- Toll Free: (800) 348-0868

Fax: (260) 665-1339

<http://www.vestil.com/> email: info@vestil.com

AWR and AWR-G-Series Aluminum Walk Ramp Instruction Manual



Models AWR-28-6A, AWR-G-28-6A-HR



Model AWG-G-18-ESR-12A

Receiving instructions:

After delivery, remove the packaging from the product. Inspect the product to determine whether it sustained damage during transport. If damage is discovered, record a complete description of it on the bill of lading and file a claim with the carrier immediately! If the product is undamaged, discard the packaging.

NOTE:

The end user is solely responsible for confirming that product design, use, and maintenance comply with laws, regulations, codes, and mandatory standards applied where the product is used.

Replacement Parts and Technical Assistance:

If you have questions that are not addressed in these instructions, or to order replacement parts, labels, and accessories, call (260) 665-7586 and ask for the Service and Parts Department. You can also reach Service and Parts online at http://www.vestilmfg.com/parts_info.htm.

Electronic Copies of Instruction Manuals:

Additional copies of this instruction manual may be downloaded from <https://www.vestil.com/page-manuals.php>.

these instructions to avoid injury.

- The walk ramp is intended to allow persons and non-powered carts to transport materials between a fixed surface and a transport vehicle at different heights. DO NOT use the ramp for embarking or disembarking passengers. DO NOT use motorized vehicles on the ramp. DO NOT use the ramp to load or unload maritime vessels.
- ALWAYS inspect the walk ramp at the beginning of every work shift. DO NOT use the walk ramp if any damage is observed. DO NOT use a walk ramp having a bent or deformed structural member. Remove the ramp from service.
- ALWAYS wear appropriate clothing and PPE when using the ramp: long pants, non-skid footwear, and eyewear compliant with ANSI Z87.1-2010
- DO NOT use the walk ramp if you tire quickly or easily, or if you have experienced fainting spells. DO NOT use the walk ramp if you are under the influence of alcohol, medication, or other substances that affect your balance or coordination. Only use the walk ramp if you are in good physical health.
- ALWAYS position both ends of the ramp on a solid, level, dry surface when using the ramp. ALWAYS ensure the ramp is supported across the full width of the end frames at both ends. For ramps with support brackets, ALWAYS ensure both support brackets are inserted into the restraining slots. DO NOT use a ramp supported by its rail, by a handrail bracket, or by the support bracket. DO NOT use a ramp on a surface that doesn't fully support the end frame.
- ALWAYS allow as much overlap as possible between the supported end frame of the walk ramp and the corresponding edge of the supporting surface.
- DO NOT use a ramp cart or the adjustable wheels to support persons or materials on the ramp. These accessories are intended to only support the weight of the ramp.
- ALWAYS ensure the transport vehicle is chocked or otherwise restrained to prevent accidental motion.
- ALWAYS secure the walk ramp to the transport vehicle using both safety chains. DO NOT use an unsecured walk ramp.
- DO NOT allow a transport vehicle to be driven with a walk ramp attached.
- ALWAYS ensure the walk ramp is clean and free of dirt, debris, grease, oil, snow, frost, and ice.
- DO NOT exceed the maximum working height of the walk ramp.
- DO NOT load the walk ramp beyond its rated capacity. The ramp capacity can be found on the nameplate on the side rail.
- DO NOT use a split-style ramp without having both side rail sections installed.
- ALWAYS use care to center the load on the walk ramp.
- ALWAYS cross onto and off of the walk ramp via the end plates. DO NOT allow persons or carts to travel on or across the side rails of the ramp.
- DO NOT allow more than one person and cart to travel on the walk ramp at the same time.
- DO NOT store materials on or under the walk ramp.
- DO ensure that all information, safety, and warning labels remain in place and are legible.
- Maintenance and repairs are to be done only by personnel qualified to perform the required work. Consideration will not be given for warranty repair charges without prior written authorization by the manufacturer.
- DO NOT perform any modifications to the walk ramp without the manufacturer's approval. Failure to receive authorization for changes to the product automatically voids the warranty.

NOTICE

Proper use and maintenance are essential for this product to function properly.

- Always use this product in accordance with the instructions in this manual.
- Use only factory-approved replacement parts. Contact Vestil Manufacturing to order replacement or spare parts.
- Contact the manufacturer for SDS (Safety Data Sheet) information.

MODEL NUMBER AND CAPACITY

The walk ramp model number, serial number and capacities are printed on the nameplate, found on the side of the rail. Refer to the product catalog of the factory for further information. Include the model and serial numbers in all correspondence with your dealer or the factory.

The load capacity rating as printed on the nameplate of your walk ramp designates its net capacity. Include the weight of carts, persons, materials, and attached wheels when calculating the net load. The walk ramp's load capacity must never be exceeded, as permanent damage and/or personal injury may result.

SPECIFICATIONS**RAMPS**

MODEL	LENGTH	CAPACITY (lb) 4-WHEEL CART	CAPACITY (lb) 2-WHEEL CART	SERVICE HEIGHT RANGE	WEIGHT (lb)
ALUMINUM WALK RAMPS 28" WIDE OVERALL, 26" RAMP WIDTH					
AWR-28-4A	48"	3,000	2,200	6"-13"	50
AWR-28-6A	72"	2,800	2,000	6"-21"	68
AWR-28-7A	84"	2,800	1,800	6"-25"	78
AWR-28-8A	96"	2,500	1,650	6"-29"	84
AWR-28-9A	108"	2,500	1,600	6"-33"	95
AWR-28-10A	120"	2,200	1,500	6"-38"	101
AWR-28-12A	144"	1,900	1,400	6"-46"	128
AWR-28-14A	168"	1,600	1,200	6"-54"	136
AWR-28-16A	192"	1,000	1,000	6"-62"	153
ALUMINUM WALK RAMPS 28" WIDE OVERALL, 26" RAMP WIDTH STEEL SUPPORT BRACKETS (TOP)					
AWR-28-4B	49-15/16"	3,000	2,200	6"-15"	45
AWR-28-6B	73-7/8"	2,800	2,000	6"-23"	68
AWR-28-7B	85-13/16"	2,800	1,800	6"-27"	78
AWR-28-8B	97-11/16"	2,500	1,650	6"-31"	84
AWR-28-9B	109-5/8"	2,500	1,600	6"-35"	95
AWR-28-10B	121-9/16"	2,200	1,500	6"-40"	105
AWR-28-12B	145-7/16"	1,900	1,400	6"-48"	128
AWR-28-14B	169-1/4"	1,600	1,200	6"-56"	136
AWR-28-16B	193-1/8"	1,000	1,000	6"-64"	154
ALUMINUM WALK RAMPS 38" WIDE OVERALL, 36" RAMP WIDTH					
AWR-38-4A	48"	3,000	2,200	6"-13"	63
AWR-38-6A	72"	2,800	2,000	6"-21"	86
AWR-38-7A	84"	2,800	1,800	6"-25"	88
AWR-38-8A	96"	2,500	1,650	6"-29"	105
AWR-38-9A	108"	2,500	1,600	6"-33"	113

MODEL	LENGTH	CAPACITY (lb) 4-WHEEL CART	CAPACITY (lb) 2-WHEEL CART	SERVICE HEIGHT RANGE	WEIGHT (lb)
AWR-38-10A	120"	2,200	1,500	6"-38"	125
AWR-38-12A	144"	1,900	1,400	6"-46"	150
AWR-38-14A	168"	1,600	1,200	6"-54"	168
AWR-38-16A	192"	1,000	1,000	6"-62"	198
ALUMINUM WALK RAMPS 38" WIDE OVERALL, 36" RAMP WIDTH STEEL SUPPORT BRACKETS (TOP)					
AWR-38-4B	49-15/16"	3,000	2,200	6"-15"	55
AWR-38-6B	73-7/8"	2,800	2,000	6"-23"	88
AWR-38-7B	85-13/16"	2,800	1,800	6"-27"	88
AWR-38-8B	97-11/16"	2,500	1,650	6"-31"	105
AWR-38-9B	109-5/8"	2,500	1,600	6"-35"	113
AWR-38-10B	121-9/16"	2,200	1,500	6"-40"	125
AWR-38-12B	145-7/16"	1,900	1,400	6"-48"	150
AWR-38-14B	169-1/4"	1,600	1,200	6"-56"	168
AWR-38-16B	193-1/8"	1,000	1,000	6"-64"	216
ALUMINUM GRIP-STRUT WALK RAMPS 28" WIDE OVERALL, 26" RAMP WIDTH					
AWR-G-28-6A	73-1/4"	2,800	2,000	6"-21"	41
AWR-G-28-7A	85"	2,800	1,800	6"-25"	59
AWR-G-28-8A	96-3/4"	2,500	1,650	6"-29"	61
AWR-G-28-9A	108-1/2"	2,500	1,600	6"-33"	63
AWR-G-28-10A	120-1/4"	2,200	1,500	6"-38"	68
AWR-G-28-12A	143-3/4"	1,900	1,400	6"-46"	77
AWR-G-28-14A	167-1/4"	1,600	1,200	6"-56"	89
AWR-G-28-16A	190-3/4"	1,000	1,000	6"-62"	122
ALUMINUM GRIP-STRUT WALK RAMPS 38" WIDE OVERALL, 36" RAMP WIDTH					
AWR-G-38-6A	73-1/4"	2,800	2,000	6"-21"	55
AWR-G-38-7A	85"	2,800	1,800	6"-25"	59
AWR-G-38-8A	96-3/4"	2,500	1,650	6"-29"	66
AWR-G-38-9A	108-1/2"	2,500	1,600	6"-33"	73
AWR-G-38-10A	120-1/4"	2,200	1,500	6"-38"	80
AWR-G-38-12A	143-3/4"	1,900	1,400	6"-46"	94
AWR-G-38-14A	167-1/4"	1,600	1,200	6"-56"	123
AWR-G-38-16A	190-3/4"	1,000	1,000	6"-62"	142
ALUMINUM GRIP-STRUT SPLIT-STYLE WALK RAMPS					
AWR-G-36-ESR-12A 36" wide overall 33-7/8" ramp width	143-3/4"	1,800	1,400	6"-47"	140
AWR-G-18-ESR-12A-EXT 17-3/16" width extension	143-3/4"	1,800	1,400	6"-47"	63

HANDRAIL KITS

Handrail kits add approximately 4-½" to the overall width of a ramp. The top of the rail is 42" above the walking surface of the ramp. Handrail kits must be installed by the customer. See Installation Instructions on page 6.

HANDRAIL KIT	FOR RAMPS	# HANDRAILS	WT (lb)
AWR-HR-6-RF	AWR-28-6A	2	35
	AWR-28-6B		
	AWR-G-28-6A		
AWR-HR-7-RF	AWR-28-7A	2	38
	AWR-28-7B		
	AWR-G-28-7A		

AWR-HR-8-RF	AWR-28-8A AWR-28-8B AWR-G-28-8A		AWR-38-8A AWR-38-8B AWR-G-38-8A		2	41
AWR-HR-9-RF	AWR-28-9A AWR-28-9B AWR-G-28-9A		AWR-38-9A AWR-38-9B AWR-G-38-9A		2	45
AWR-HR-10-RF	AWR-28-10A AWR-28-10B AWR-G-28-10A	AWR-28-10A-WH AWR-28-10B-WH AWR-28-G-10A-WH	AWR-38-10A AWR-38-10B AWR-G-38-10A	AWR-38-10A-WH AWR-38-10B-WH AWR-G-38-10A-WH	2	48
AWR-HR-12-RF	AWR-28-12A AWR-28-12B AWR-G-28-12A	AWR-28-12A-WH AWR-28-12B-WH AWR-28-G-12A-WH	AWR-38-12A AWR-38-12B AWR-G-38-12A	AWR-38-12A-WH AWR-38-12B-WH AWR-G-38-12A-WH	4	77
AWR-HR-14-RF	AWR-28-14A AWR-28-14B AWR-G-28-14A	AWR-28-14A-WH AWR-28-14B-WH AWR-28-G-14A-WH	AWR-38-14A AWR-38-14B AWR-G-38-14A	AWR-38-14A-WH AWR-38-14B-WH AWR-G-38-14A-WH	4	83
AWR-HR-16-RF	AWR-28-16A AWR-28-16B AWR-G-28-16A	AWR-28-16A-WH AWR-28-16B-WH AWR-28-G-16A-WH	AWR-38-16A AWR-38-16B AWR-G-38-16A	AWR-38-16A-WH AWR-38-16B-WH AWR-G-38-16A-WH	4	89

WHEELS

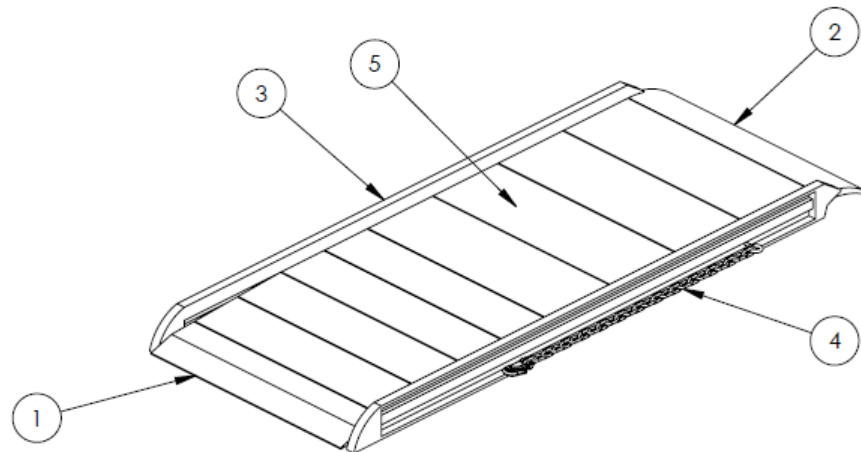
Adjustable-height wheel kits are factory-installed. When ordering, add a **-WH** suffix to the ramp model number.

Ramp carts are installed by the customer.

MODEL NUMBER	FOR RAMPS	SERVICE HEIGHT RANGE	WEIGHT (lb)*
ADJUSTABLE-HEIGHT WHEELS			
AWR-28-###-WR and AWR-G-28-###-WR	10-foot ramps	18-7/8"-38"	113
	12-foot ramps	17-1/4"-46"	
	14-foot ramps	16-5/16"-56"	
	16-foot ramps	15-11/16"-62"	
AWR-38-###-WR and AWR-G-38-###-WR	10-foot ramps	18-7/8"-38"	114
	12-foot ramps	17-1/4"-46"	
	14-foot ramps	16-5/16"-56"	
	16-foot ramps	15-11/16"-62"	
RAMP CARTS			
AWR-R-CART-28	All 28" wide ramps	Minimum service height = 14"	59
AWR-R-CART-38	All 38" wide ramps	Minimum service height = 14"	65

* Weight is in addition to weight of walk ramp.

MAJOR COMPONENTS



ITEM	DESCRIPTION
1	END RAMP (LOWER)
2	END RAMP (UPPER)
3	SIDE RAIL
4	SAFETY CHAIN
5	WALKING SURFACE

INSTALLATION INSTRUCTIONS

All AWR- and AWR-G series walk ramps come fully assembled from the factory.

Split-style ramps may be widened by inserting one or more expansion sections between the side sections. Sections are held together by locking tabs and slots on the bottom of the side rails. To separate sections, lift the slotted segment by its handle.



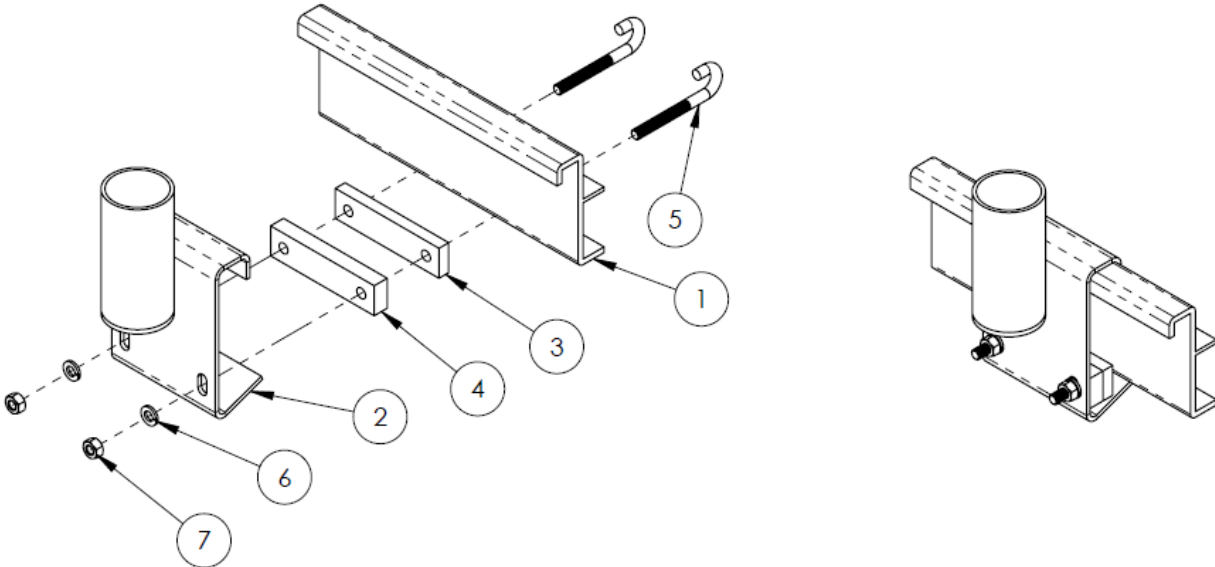
DO NOT use a split-style ramp without having both side rail sections installed. These provide protection against a cart rolling off the side of the ramp.

Walk ramps having adjustable-height wheels (-WH suffix on part number) come with this option factory-installed. The AWR-WH-28-SERIES and AWR-WH-38-SERIES options each weigh approximately 113 lb. Include this weight in calculating the net load on the walk ramp. **DO NOT** use the wheels to support a load on the ramp.

Walk ramps having hand rails (-HR suffix on the part number) and hand rail retrofit kits will require assembly after delivery.

Handrail assembly.

1. Place the handrail mount brackets (item 2) on the ramp's aluminum side rail (1) in their approximate positions.
Your handrail kit will have either four or eight brackets, depending on the number of rail sections.
2. Insert a 3/8" spacer (3) and a 1/2" spacer (4) between each bracket and the side rail.
3. From the inside of the walk ramp, insert two J-bolts (5) through the bracket and spacers, under the side rail. Make sure the bolt hooks over the bottom flange of the side rail. Attach a 5/16" lock washer (6) and a 5/16" hex nut (7) on the end of each J-bolt, but do not tighten.
4. Insert a handrail section into two adjacent brackets. Reposition the brackets as needed.
5. Tighten the hex nuts after positioning all the brackets.



Item	Part Number	Description	Kit Qty
1	-	EXISTING RAMP SIDE RAIL	-
2	18-516-006	WELDMENT, BRACKET, HANDRAIL MOUNT	4 or 8
3	18-113-006	SPACER, BLOCK (3/8")	4 or 8
4	18-113-007	SPACER, BLOCK (1/2")	4 or 8
5	18-145-001	J-BOLT, FORMED	8 or 16
6	33620	5/16" LOCK WASHER	8 or 16
7	36104	5/16" HEX NUT	8 or 16
not shown	Varies	HAND RAIL SECTION	2 or 4

Wheel cart installation.

1. Lower the ramp cart wheels.
2. Place your walk ramp on the ramp cart. Center the ramp on the cart for best ease of handling.
3. Insert and tighten the four hex bolts to secure the ramp to the cart.



RECORD OF SATISFACTORY CONDITION

Before using the walk ramp for the first time, make a record describing its appearance. Thoroughly photograph the walk ramp from multiple angles, including all welds and anchor points, and all labeling applied to it. Describe where each label is located. Collect all photographs and writings into a file. Mark the file appropriately to identify it. This record documents satisfactory condition. Compare the results of future inspections to this record to determine if the walk ramp is in satisfactory condition. Do not use the walk ramp unless it is in satisfactory condition.

OPERATION INSTRUCTIONS

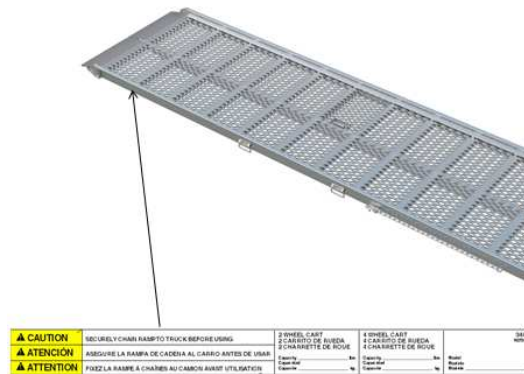
When used in occupational settings (i.e., by employees), use must conform to occupational health and safety (OSH) rules applicable in the location where the ramp is used. In particular, consult OSHA standard 1910 Subpart D (Walking-Working Surfaces) for the owner's/user's responsibilities regarding the operation, care, and maintenance of this product. **Before putting the ramp in service, it is the user's responsibility to contact local OSH and building department authorities to determine how laws, regulations, codes, etc. affect your use of the ramp.**

The user shall ensure that operators understand that safe use is the operator's responsibility. The user shall also ensure that operators are knowledgeable of, and observe, the safety rules and practices in this section.

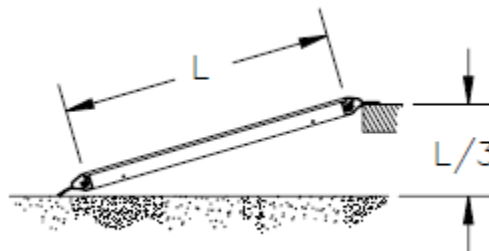
All Vestil walk ramps are suitable for indoor and outdoor use. They are intended to allow persons and non-powered carts to transport materials between a fixed surface and a transport vehicle at different heights.

Prior to use.

Ensure that the walk ramp is capable of supporting the intended load. The ramp capacity is printed on the nameplate, located on the outside rail.



Ensure that the height differential does not exceed the height limit for the ramp. If you are unsure of the height limit, divide the length of your ramp's side rail extrusion by 3.



Inspect the walk ramp for damaged parts, burrs or sharp edges, loose or missing bolts, or any other condition that would prevent its safe use. Have a qualified person repair or replace damaged or worn parts before using the ramp.

Ensure all surfaces are clean and free of dirt, debris, oil, or grease. Clean off any frost, ice, or snow from units stored or used outdoors.

Keep the area around the ramp clear of clutter. Keep the work area well-lit.

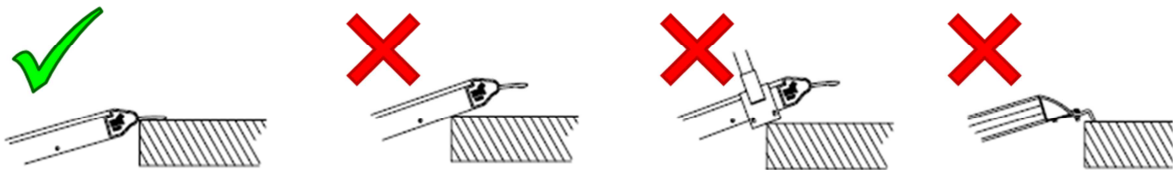
Wear appropriate clothing and PPE when using the ramp: long pants, non-skid footwear, and eyewear compliant with ANS Z87.10-2010. Protective gloves are recommended when handling the ramp.

During use.

Use wheel chocks or trailer restraints to prevent unexpected motion of the transport vehicle.

Practice proper lifting techniques when manually handling walk ramps. Most ramps will require two persons or a fork truck for safe lifting.

Position the walk ramp between the transport vehicle and a solid, level, dry surface. The front of the ramp (chain side) must be facing the transport vehicle. The ramp must be fully supported by the end plates at both ends. For units with the B-style brackets, both support brackets must be inserted into the restraining holes. DO NOT use a ramp supported by the rail, by the handrail bracket, or by the tips of the support brackets.



For walk ramps having the adjustable-height wheels (-WH suffix on model number), use the hand crank to adjust the height of the ramp. Lift the front of the ramp above the vehicle bed when positioning the ramp. Lift the wheels 1"-2" above the ground to account for ramp flex when using the ramp.



DO NOT use the adjustable-height wheels to support persons or materials on the walk ramp.

Secure the walk ramp to the transport vehicle using both safety chains. This connection should be as tight as possible, but should allow for shifts in vehicle height caused by a changing load.

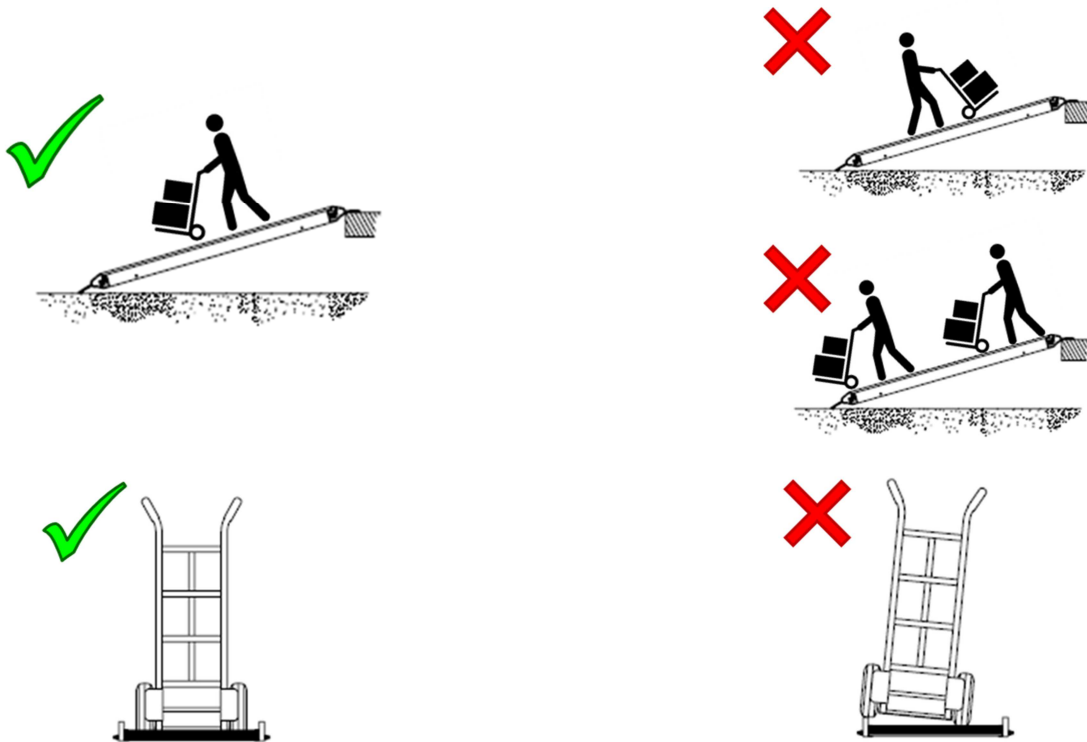


Walk up the ramp at a steady even pace. Do not run or bounce on the ramp.

When moving materials with a hand truck or a cart, always keep a cart at a lower elevation on the walk ramp (i.e., pull the cart up, push the cart down).

Transfer only one cart at a time on the ramp. Allow only one person at a time to stand on the ramp.

Keep the cart centered on the ramp. Do not attempt to use a cart having an outer wheel track wider than the spacing between the side rails. Do not allow a cart to ride on or over the side rail.



When finished using the walk ramp, disconnect the chains from the transport vehicle and return the ramp to a designated storage area. DO NOT allow a transport vehicle to be driven with the walk ramp attached.

⚠ WARNING	<i>DO NOT exceed the walk ramp's load capacity. Injury to personnel or permanent damage to the ramp can result from exceeding the listed capacity. Note: Take into account the weight of both the material and personnel crossing the ramp when determining the load.</i>
⚠ WARNING	<i>This walk ramp is not approved for embarking or disembarking passengers.</i>
⚠ WARNING	<i>This walk ramp is not approved for loading or unloading maritime vessels.</i>

INSPECTION AND MAINTENANCE

Proper maintenance is essential for maximizing the service life of this product. If an inspection reveals any irregularities in the walk ramp's condition, repair it before returning it to service. Only use manufacturer-approved replacement parts. Contact Technical Service if you have questions that are not addressed in these instructions or if you are uncertain how to address an issue discovered during an inspection. Technical Service can be contacted by calling (260) 665-7586 and asking for the Service and Parts Department or by submitting questions online at http://www.vestilmfg.com/parts_info.htm.



Care should be taken to identify all potential hazards and comply with applicable safety procedures before beginning work. Only qualified individuals should attempt troubleshooting and repair of this product.

Initial inspection.

Prior to use, any new, altered, modified, or repaired walk ramp shall be inspected by a qualified person. Complete the daily inspection items before releasing the walk ramp for regular use.

Daily inspection.

At the beginning of every shift, a designated person shall complete these inspections. Remove the walk ramp from service and repair or replace any damaged parts if any of the following is found. Look for:

1. Dirt, debris, oil, grease, frost, ice, and snow. Clean, sweep, or wipe as needed.
2. Burrs or sharp edges.
3. Bent or deformed structural members.
4. Cracked or broken welds.
5. Loose or missing fasteners.
6. Bent or deformed links or hooks in the tie-down chains.
7. Damaged or unreadable labels.

OWNER RESPONSIBILITY

The owner's responsibility includes the following:

1. The owner should recognize the inherent danger of the interface between the ground and the transport vehicle. The owner should, therefore, train and instruct users in the safe use of the walk ramp in accordance to the information provided in this Manual.
2. There shall be as much overlap as possible between each supported end of the walk ramp and the corresponding edge of the supporting surface.
3. Nameplates, cautions, instructions, and posted warnings should not be obscured from the view of users.
4. Manufacturer's recommended periodic maintenance and inspections procedures in effect at the date of shipment shall be followed. Written records of the performance of these procedures should be kept.
5. Walk ramps that are structurally damaged shall be removed from service, inspected by the manufacturer's authorized representative, and repaired as recommended by the manufacturer before being placed back in service.
6. The owner shall see that all labels are in place and legible and that this Manual is provided to users. The manufacturer shall supply replacement labels and Manuals upon request of the owner.
7. When using this walk ramp, the brakes on the transport vehicle shall be applied; wheel chocks or equivalent positive restraint shall be engaged, and; the ramp shall be secured to the vehicle using the tie-down chains.

LABELING DIAGRAM

The walk ramp should be labeled as shown in the diagrams. Label content and location are subject to change, so your product might not be labeled exactly as shown. Thoroughly photograph the walk ramp when you first receive it as discussed in the Record of Satisfactory Condition section on p. 8. Make sure that your record includes a photograph of each label. Replace all labels that are or later become damaged, missing, or not easily readable (e.g. faded).

To order replacement labels, contact the technical service and parts department online at http://www.vestilmfg.com/parts_info.htm. Alternatively, you may request replacement parts and/or service by calling (260) 665-7586 and asking the operator to connect you to the Parts Department.

AWR AWR-G



▲ CAUTION	SECURELY CHAIN RAMP TO TRUCK BEFORE USING.	2 WHEEL CART 2 CARRITO DE RUEDA 2 CHARRIETTE DE ROUE	4 WHEEL CART 4 CARRITO DE RUEDA 4 CHARRIETTE DE ROUE	344 1072
▲ ATENCIÓN	ASEGURE LA RAMPA DE CADENA AL CARRIO ANTES DE USAR.	Capacity Capacidad Capacité	Capacity Capacidad Capacité	Model Modelo Modèle
▲ ATTENTION	FIXEZ LA RAMPE À CHAINES AU CAMION AVANT UTILISATION.			

344

Label 1072 is to be applied to the outside of individual packaging

▲ WARNING: Reproductive Harm - www.P65Warnings.ca.gov	▲ ADVERTENCIA: Daño Reproductivo - www.P65Warnings.ca.gov
▲ WARNING: Cancer - www.P65Warnings.ca.gov	▲ ADVERTENCIA: Cáncer - www.P65Warnings.ca.gov

ALUMINUM WALK RAMP

7/21/2020

LIMITED WARRANTY

Vestil Manufacturing Corporation ("Vestil") warrants this product to be free of defects in material and workmanship during the warranty period. Our warranty obligation is to provide a replacement for a defective, original part covered by the warranty after we receive a proper request from the Warrantee (you) for warranty service.

Who may request service?

Only a warrantee may request service. You are a warrantee if you purchased the product from Vestil or from an authorized distributor AND Vestil has been fully paid.

Definition of "original part"?

An original part is a part used to make the product as shipped to the Warrantee.

What is a "proper request"?

A request for warranty service is proper if Vestil receives: 1) a photocopy of the Customer Invoice that displays the shipping date; AND 2) a written request for warranty service including your name and phone number. Send requests by one of the following methods:

US Mail

Vestil Manufacturing Corporation
2999 North Wayne Street, PO Box 507
Angola, IN 46703

Fax

(260) 665-1339
Phone
(260) 665-7586

Email

info@vestil.com
Enter "Warranty service request" in subject field

In the written request, list the parts believed to be defective and include the address where replacements should be delivered. After Vestil receives your request for warranty service, an authorized representative will contact you to determine whether your claim is covered by the warranty. Before providing warranty service, Vestil will require you to send the entire product, or just the defective part (or parts), to its facility in Angola, IN.

What is covered under the warranty?

The warranty covers defects in the following original, dynamic parts: motors, hydraulic pumps, motor controllers, and cylinders. It also covers defects in original parts that wear under normal usage conditions ("wearing parts"), such as bearings, hoses, wheels, seals, brushes, and batteries.

How long is the warranty period?

The warranty period for original dynamic components is 1 year. For wearing parts, the warranty period is 90 days. Both warranty periods begin on the date Vestil ships the product to the Warrantee. If the product was purchased from an authorized distributor, the periods begin when the distributor ships the product. Vestil may, at its sole discretion, extend a warranty period for products shipped from authorized distributors by up to 30 days to account for shipping time.

If a defective part is covered by the warranty, what will Vestil do to correct the problem?

Vestil will provide an appropriate replacement for any covered part. An authorized representative of Vestil will contact you to discuss your claim.

What is not covered by the warranty?

The Warrantee (you) are responsible for paying labor costs and freight costs to return the product to Vestil for warranty service.

Events that automatically void this Limited Warranty.

- Misuse;
- Negligent assembly, installation, operation or repair;
- Installation/use in corrosive environments;
- Inadequate or improper maintenance;
- Damage sustained during shipping;
- Collisions or other accidents that damage the product;
- Unapproved modifications: Do not modify the product IN ANY WAY without first receiving written authorization from Vestil.

Do any other warranties apply to the product?

Vestil Manufacturing Corp. makes no other express warranties. All implied warranties are disclaimed to the extent allowed by law. Any implied warranty not disclaimed is limited in scope to the terms of this Limited Warranty. Vestil makes no warranty or representation that this product complies with any state or local design, performance, or safety code or standard. Noncompliance with any such code or standard is not a defect in material or workmanship.

